



CONFERENCE & EVENTS

We're

Ready

When you are

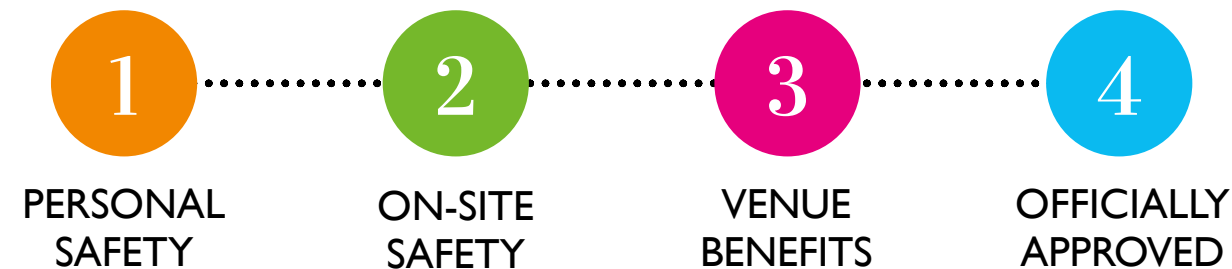
Welcome back

We understand that it has been a challenging time for the hospitality and events industry, which is why Newbury Racecourse is looking forward to welcoming you back. We've been working hard to adapt to a 'new' normal and have introduced a number of protective measures across the site to ensure the safest possible environment for everyone. Whatever the event, whatever the size, we have your safety covered.

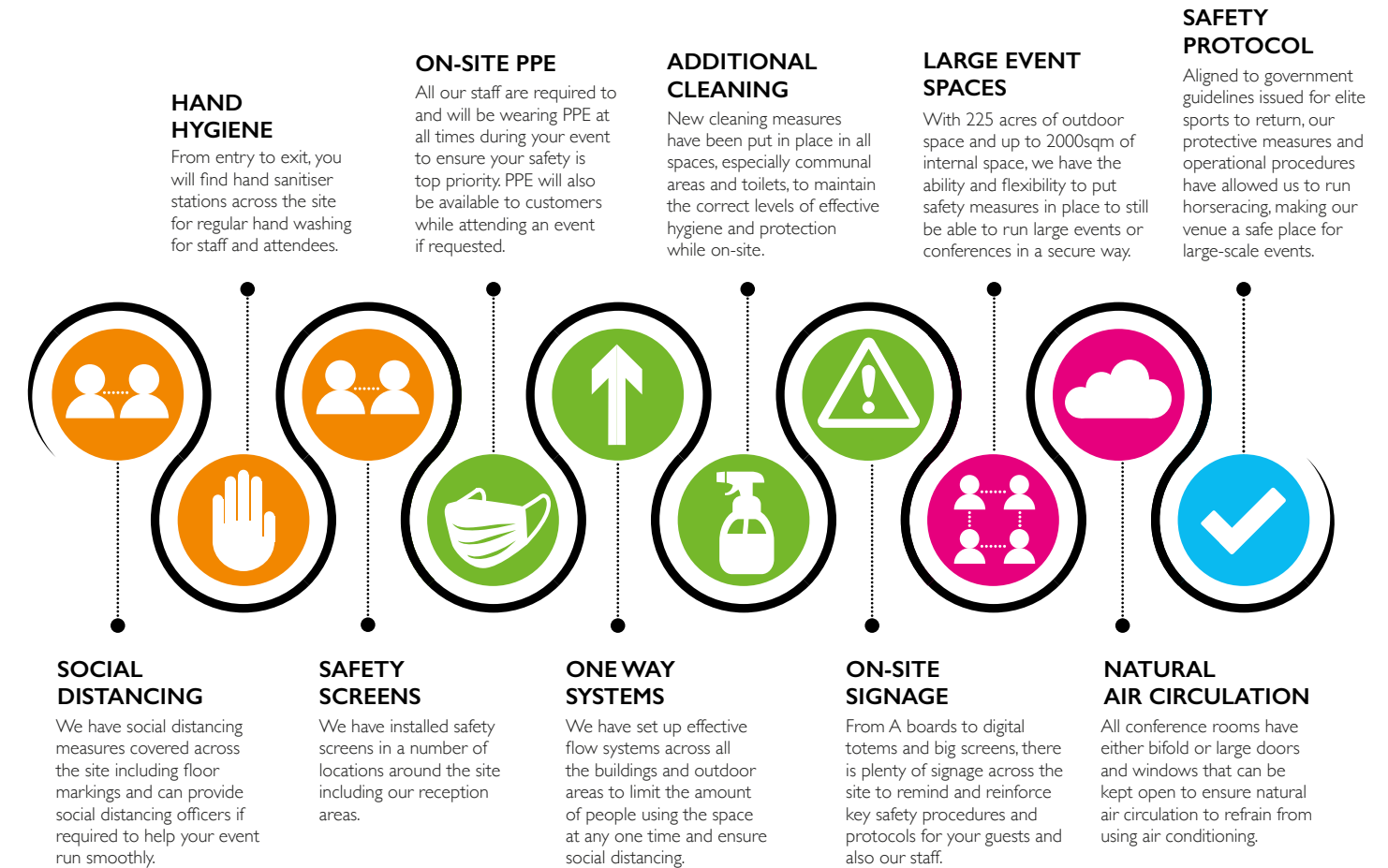


Our safety plan

We have installed a number of safety measures and procedures across our site.



Our measures





Our experience makes your experience.

The 'WOW' factor

When you're looking for a venue for your event, what are you really looking for? Convenient location, of course. Plus high-quality, versatile facilities, including outdoor as well as indoor space. And a stunning setting to give your occasion the 'wow' factor.

At Newbury Racecourse, you can see these attributes straight away. But it's what's behind them that really counts: our expert team, experienced in running outstanding conferences, banquets, exhibitions and other events. Great people in a remarkable place, helping you make the right and memorable impression.

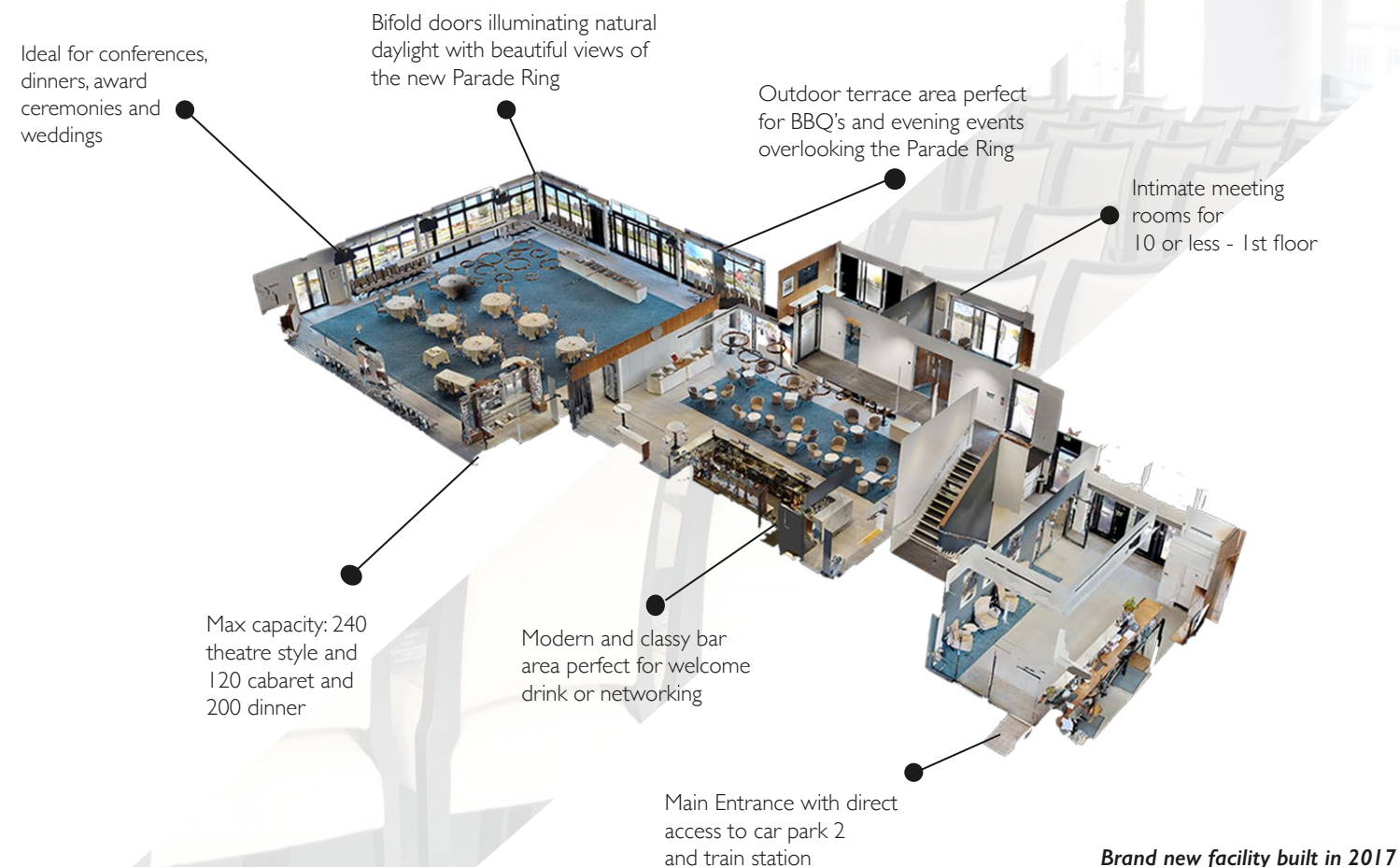
There's room to discuss, debate and explore. Space to connect, reward and entertain. And 225 acres of beautifully maintained grounds in which to inspire people, show your wares, or build a team. We run indoor conferences and events for 10 to 1,000 people, while outdoor, we have space for up to 24,000. Between them, our four impressive buildings have over 50 unique and flexible conference and events spaces to support larger conferences with separate meeting, workshop, seminar and break-out areas.



Owners Club

A space to truly connect with others

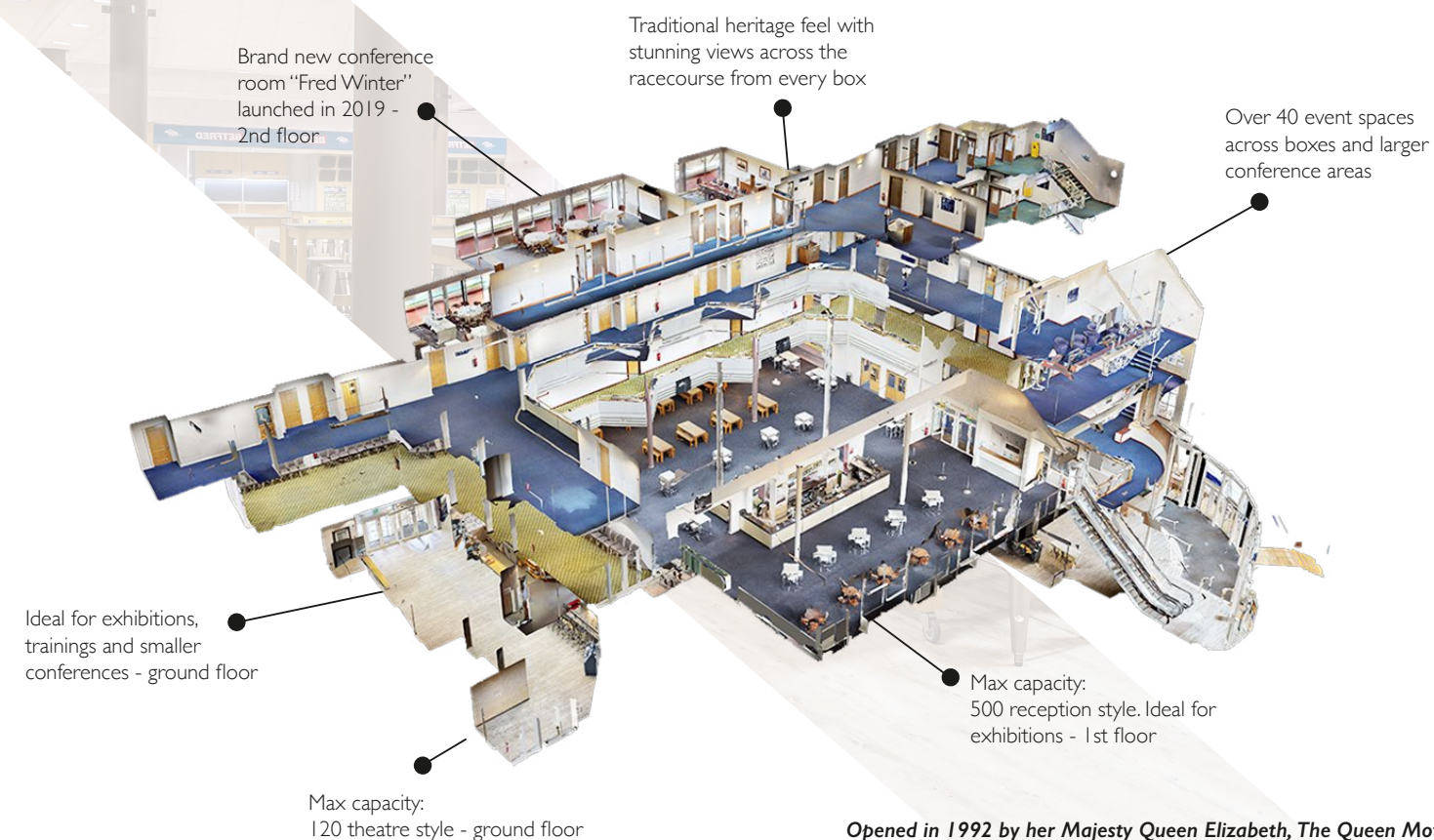
Our Owners Club perfectly balances elegance and versatility. As our newest event space, it has a sophisticated, modern feel, as well as all the latest technology and facilities to support your meetings and events – whether for formal, informal or more intimate gatherings. And just as impressive are the views looking from the outdoor terrace over the Parade Ring.



Berkshire Stand

A place full of history

Our Berkshire Stand's more traditional feel provides huge potential for exhibitions, training events and smaller conferences. The classic décor pays homage to a rich racing history, while its intelligent layout – from the Royal Box to the Syndicate Rooms – offers easy access to four floors of multi-use space. Everything is served by state-of-the-art facilities, with many areas providing stunning views across the racecourse.



Hampshire Stand

A breathtaking view of the course

Our oldest and perhaps, the most iconic building, The Hampshire Stand which is transformed into a warm and welcoming event space continues to draw racegoers and businesses alike. It's also the perfect place to admire your team as they take part in fun activities on the lawn, or enjoy the remarkable views. An inspiring backdrop in which to get down to business, network or celebrate in style with clients and colleagues.



Ideal for conferences, dinners, award ceremonies and weddings

Max capacity: 300 theatre style and 220 cabaret - 2nd floor

Floor to ceiling windows overlooking the course and finish line

Lawn area perfect for outdoor activities - opposite stand

Ideal space for catering and break out areas - 2nd floor. Adjacent to main conference room with box

'Members Club' Brand new events space launched in November 2019. Max capacity 100 reception - ground floor

The first building built in 1905

Grandstand

The pillar of the racecourse

Designed by world-renowned British architect Sir Norman Foster, our Grandstand is guaranteed to make a grand impact for exhibitions, product launches and larger conferences. Set over 3 tiers, it has large vehicle access doors, easy access to our racetrack and more than 600 car-parking spaces. Huge and hugely versatile, The Grandstand also provides visitors with unbeatable views across the racecourse from five large terraces.



Max capacity: 600 theatre style and 500 cabaret - 2nd floor

Racetrack accessible from 1st floor and outside lawn area

Unbeatable views across the racecourse with 5 large terraces - 2nd floor

Ideal for exhibitions, product launches, award ceremonies and large gala dinners

Ground floor space totals 1,000sqm of hard standing concrete space

Max capacity: 1000 theatre style and 650 cabaret - ground floor

Ground floor with vehicle access doors perfect car launches and large exhibitions

Built in 2000 by world-renowned British architect Sir Norman Foster



Automotive Events

A stunning backdrop. Grand architecture. Impressive spaces. A creative approach. We have everything you need to create an exciting, super-charged atmosphere for your automotive event – whether it's a top-secret car launch, new-model unveiling, vintage car show or super-car expo. We'll ensure it's the shining showcase you need it to be. High-tech lighting and sound systems add to the drama, while our impressive on-site facilities, catering, versatile buildings and grounds, can cater for large public events or smaller media launches.

- Vehicle access doors
- 1,000sqm total floor space of The Grandstand (exhibition hall)
- On-site security and 24-hour access
- Confidentiality procedures for launches
- Large car parks
- Outdoor test driving and show space
- CCTV across site



Outdoor & **Team** Building

**We are a leading
events venue with over
50 unique spaces and
225 acres of beautifully
maintained land.**

Newbury Racecourse is a great backdrop to bring people together to create closer professional connections, or build a deeper sense of camaraderie among colleagues. Whatever your objectives, we'll help you create the perfect team-building activities to achieve your goals or complement your business event – either indoors or in our 225 acres of beautiful countryside. Corporate fun days, charity bike rides, festivals, and a hundred and one other ideas – we've seen and done it all.

Show & Tell...

More space. More flexibility. And more mood-creating tech. What more could you want to make your exhibition a success? The Grandstand gives you 1,000m² and up to 5-meter high ceilings of pillar-free space – ideal for large exhibition stands or large vehicles. While our Berkshire Stand's concourse provides a roomy, yet more intimate space for exhibition events or product launches. Then there's the Paddock View and Long Room – great for smaller events and keeping delegates or visitors refreshed.



...Best on Show

Lights, Camera, Action!

Because we're run independently, films crews, studios, and production companies have no restrictions. Just 10,000 sqft of studio-like space and more than 225 acres of land to film in. Put simply, everything is possible – from action sequences and roof stunts to green-screen sets and helicopter landings.

Facilities

- Mainline train station on-site
- £50m redeveloped site
- Escalators
- Floor-to-ceiling bi-fold doors
- Outdoor space
- Woodland
- Kitchens
- Large new toilets
- Modern on-site hotel
- Corridors
- Over 3,700 parking spaces
- Bars
- Jockeys' changing rooms
- Terraces and balconies
- Historical features
- Helipad
- Flat roof
- High buildings



Full of Christmas Spirit

What Yuletide celebration have you got in mind? A corporate affair, a private party perhaps, or a public event that's open to joiners? Whatever the occasion, whoever it's for, no matter the theme, our creative team of planners are here to make sure your festive event jingle-bell rocks. From superb catering options, to DJs and entertainment, to drinks receptions, to race tickets and all the festive accoutrements, you'll be in very capable hands.



The early years

Stretching back 115 years, here are some key milestones in the history of Newbury Racecourse.

1805

The first recorded racing takes place with 'Newbury Races', an annual two-day meeting at Enborne Heath. In 1811, the event moves to Woodhay Heath until 1815.

1904

The Newbury Racecourse Company is formed, the land is purchased, and construction of the buildings (including the Hampshire Stand) and stables begins. The cost: £57,240.

1905

The inaugural meeting takes place. Copper King, ridden by Charles Trigg and trained by Charles Marnes, wins the first ever race: the Whatcombe Handicap.

2000

The impressive 3-tiered Grandstand, designed by world-renowned British architect Sir Norman Foster, is built. Home to the largest indoor space at Newbury Racecourse.

PRESENT

Newbury Racecourse hosts 29 race days a year, including the famous Ladbrokes Winter Carnival and Al Shaqab Lockinge Stakes. The conference and events side of the business continues to grow.



Kingsclere trainer, John Porter, proposes a new racecourse at Newbury. It's another 90 years before it happens.

1895

The War Office requisitions Newbury Racecourse to make way for a camp to house military personnel.

1914

Her Majesty Queen Elizabeth, The Queen Mother, opens the Berkshire Stand in 1992.

1992

As well as starting a £50m redevelopment, we open The Lodge Hotel. It quickly becomes popular with racegoers, corporate clients, and those visiting the local area.

2015

A great day Deserves

a great night's sleep

Imagine 36 individually-styled and luxurious rooms with cotton bed linen and super-king Voyager beds. Imagine delicious menus morning, noon and night, an extensive wine list and choice of drinks and a sun terrace. Now, imagine this nestled in the heart of the racecourse, yet just a short walk from Newbury Racecourse train station. This is The Lodge. The perfect overnight accommodation for event organisers and delegates – all at preferential rates.

Make a sustainable difference.

We are a leading conference and events venue with over 50 unique spaces and 225 acres of beautiful land.

We're privileged to live and work in some of Berkshire's most beautiful countryside, so we respect and take responsibility for our environment and never take it for granted. This also extends to playing our part to lead a more sustainable and environmentally-friendly business, wherever we can. Our 'Green Team' works hard at implementing new initiatives and finding new ways to lower our carbon footprint.

We use eco-friendly products

We have solar panels across site

We serve local and organic food

We have a water recycling plan in place

We use natural bio products on our race track

We support local charities by delivering any surplus food





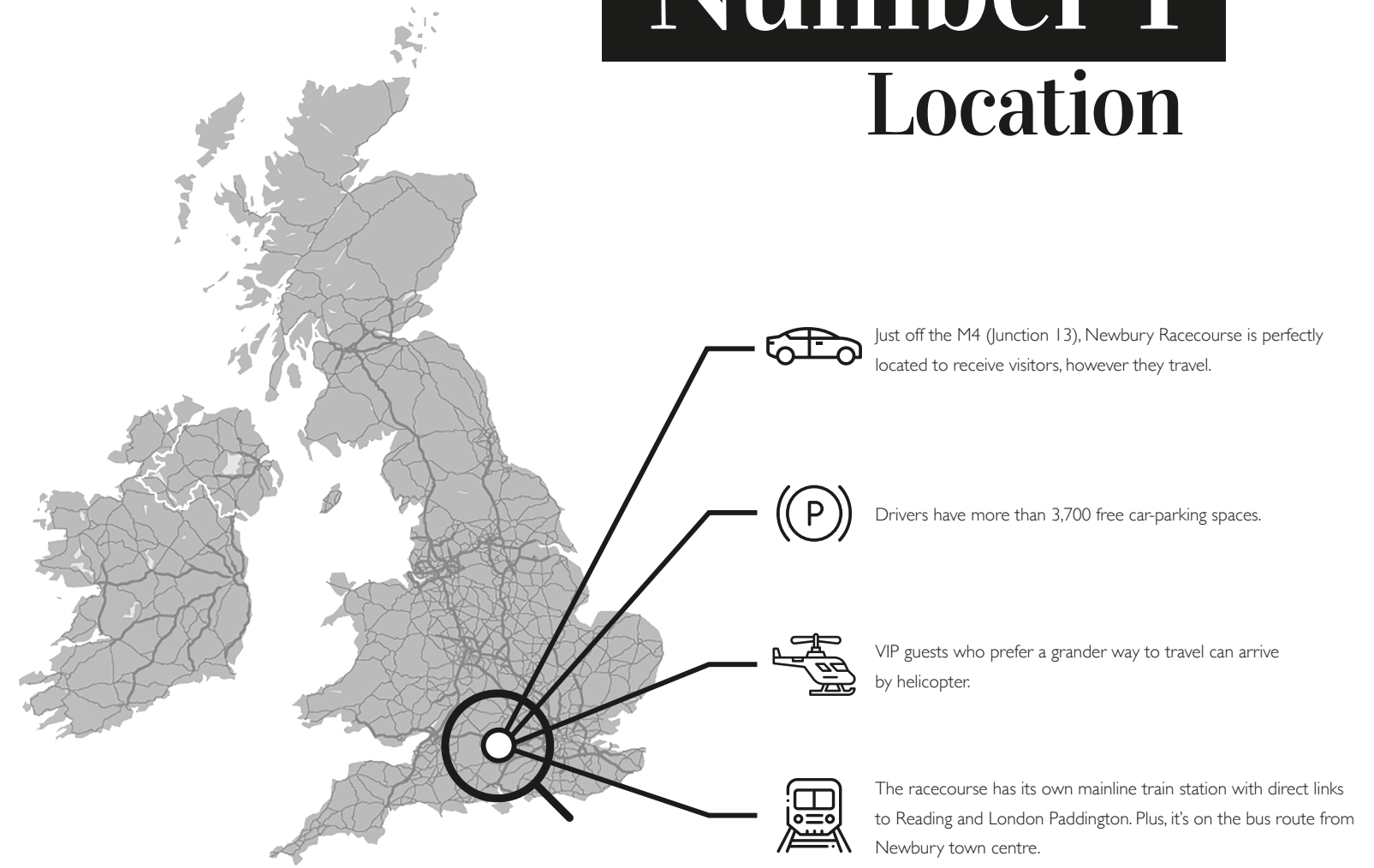
Hospitality & Dining

Soak up the atmosphere of a racecourse steeped in history, built more than 115 years ago. Over the years we have welcomed royalty, famous faces and the most legendary equine heroes, as well as millions of racegoers.

Experience the races in true style in one of our restaurants or hospitality suites. Our 35 hospitality suites are available for private hire and cater for anything between 10 and 120 guests. We have two restaurants which are available to book in advance, both of which boast fantastic views of the track. The Hennessy Restaurant is the place to experience fine dining, with panoramic views overlooking the winning line, whilst our Racegoers Restaurant offers an informal dining experience with great views of the final furlong.

**For hospitality & dining enquires
please contact the team at**
hospitality@newburyracecourse.co.uk

Make us your Number 1 Location





NEWBURY RACECOURSE · NEWBURY · BERKSHIRE · RG14 7NZ
01635 40015 | EVENTS@NEWBURYRACECOURSE.CO.UK
EVENTS.NEWBURYRACECOURSE.CO.UK